

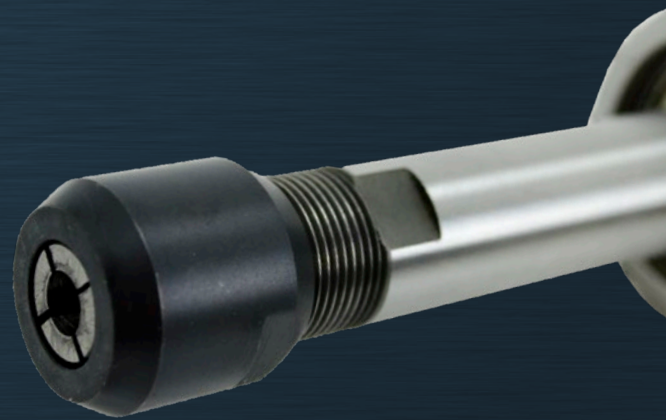


**SPITZNAS**  
CUSTOMIZED POWER SOLUTIONS



# DIE GRINDERS

TOOLS FOR THE SPECIALIST



PNEUMATIC



HYDRAULIC



# SYSTEM CONCEPT



Collet



Motor unit



Air connection: 1/4" female on twist throttle  
1/4" male on lever valve



without  
spindle extension

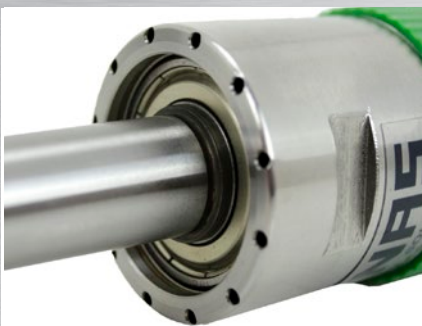


with 50 mm  
spindle extension



with 100 mm  
spindle extension

Air exhaust forwards or backwards



Spindle extension




Lever valve with self lock



# PNEUMATIC



Our small and handy die grinders with collet, also available with 50 mm and 100 mm extension.

PNEUMATIC 

OPERATING PRESSURE 6 Bar

ORDER NO.	Valve type	Collet dia.	Spindle extension	Power	Air consumption	Speed (free)	Exhaust	Noise level LpA	Vibration level	Weight
		mm/Zoll	mm	kW	m <sup>3</sup> /min	rpm		dB(A)	m/s <sup>2</sup>	kg
<b>1 5060 0010</b>		6 mm	without	0.70	0.85	20,000	front	85.9	<2.5	1.3
<b>0020</b>	Twist throttle	1/4"								
<b>0050</b>		8 mm								
<b>1 5061 0010</b>		6 mm	without	0.70	0.85	20,000	front	85.9	<2.5	1.3
<b>0020</b>	Lever valve	1/4"								
<b>0050</b>		8 mm								
<b>1 5066 0010</b>		6 mm	without	0.70	0.85	20,000	rear	85.9	<2.5	1.8
<b>0020</b>	Twist throttle	1/4"								
<b>0050</b>		8 mm								
<b>1 5067 0010</b>		6 mm	without	0.70	0.85	20,000	rear	85.9	<2.5	1.8
<b>0020</b>	Lever valve	1/4"								
<b>0050</b>		8 mm								
<b>1 5062 0010</b>		6 mm	50.00	0.70	0.85	20,000	front	85.9	<2.5	1.3
<b>0020</b>	Twist throttle	1/4"								
<b>0050</b>		8 mm								
<b>1 5063 0010</b>		6 mm	50.00	0.70	0.85	20,000	front	85.9	<2.5	1.3
<b>0020</b>	Lever valve	1/4"								
<b>0050</b>		8 mm								
<b>1 5068 0010</b>		6 mm	50.00	0.70	0.85	20,000	rear	85.9	<2.5	1.9
<b>0020</b>	Twist throttle	1/4"								
<b>0050</b>		8 mm								
<b>1 5069 0010</b>		6 mm	50.00	0.70	0.85	20,000	rear	85.9	<2.5	1.8
<b>0020</b>	Lever valve	1/4"								
<b>0050</b>		8 mm								
<b>1 5064 0010</b>		6 mm	100.00	0.70	0.85	20,000	front	90.7	<2.5	1.4
<b>0020</b>	Twist throttle	1/4"								
<b>0050</b>		8 mm								
<b>1 5065 0010</b>		6 mm	100.00	0.70	0.85	20,000	front	85.9	<2.5	1.4
<b>0020</b>	Lever valve	1/4"								
<b>0050</b>		8 mm								
<b>1 5070 0010</b>		6 mm	100.00	0.70	0.85	20,000	rear	85.9	<2.5	1.9
<b>0020</b>	Twist throttle	1/4"								
<b>0050</b>		8 mm								
<b>1 5071 0010</b>		6 mm	100.00	0.70	0.85	20,000	rear	85.9	<2.5	1.9
<b>0020</b>	Lever valve	1/4"								
<b>0050</b>		8 mm								

Subject to technical change.

Performance data at an operating pressure of 6 bar.

# TECHNICAL DATA

# TECHNICAL DATA/ SYSTEM-ACCESSORIES

## HYDRAULIC

Our small and handy hydraulic die grinders, as well as usable for underwater operation.



HYDRAULIC 

OPERATING PRESSURE 90-140 Bar

UNDERWATER OPERATION 

ORDER NO.	Valve type	Collet	Power	Volume flow	Speed (free)	Noise level LpA	Vibration level	Weight
			kW	l/min	rpm	dB(A)	m/s <sup>2</sup>	kg
1 5080 0010		Ø 6 mm						
1 5080 0020	Lever valve	Ø 1/4"	0.8	10-30	11,500	90.7	<2.5	1.6
1 5080 0050		Ø 8 mm						

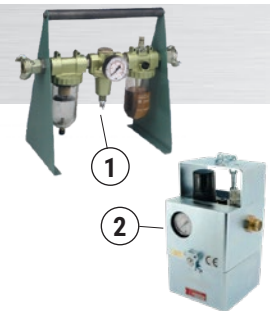
Subject to technical change.

Performance data at an operating pressure of 90 bar.

## SERVICE UNITS

Portable service units for safe operation and protection of your grinder.

ORDER NO.	Pos.	Description
9 2406 0260	1	Portable service unit with pressure regulator 3/4"
9 2406 0630	2	Portable service unit with protection housing and pressure regulator 1/2"
9 2406 0650	2	Portable service unit with protection housing and pressure regulator 3/4"



## ACCESSORIES AND CONSUMABLES

The easy and safe storage with our carrying case and the use of our multi oil guarantees the optimum condition of your machine.

ORDER NO.	Pos.	Description
9 9910 0090	1	Carrying case
9 9902 0020	2	Pneumatic oil 50 ml
9 9902 0470	3	Pneumatic oil 1000 ml
9 9902 0120	4	Multi oil for cleaning and protection



More accessories on request.

## GRINDERS RANGE

### DIE GRINDERS



### AXIAL GRINDERS



### ANGLE-/ AND VERTICAL GRINDERS



0721E