



# INTRODUCING **HYCON** UNDERWATER TOOLS



# WORKING WITH HYCON

Working with HYCON is easy.  
It's all about products, people, and partnership.



## PRODUCT

Our solutions are based on thorough research in collaboration with operators on construction sites, and under water. The equipment is simply designed for getting the job done. With over 20 years of experience with underwater tools, we know the problems our users face and that we can provide the solution.



## PEOPLE

At HYCON, we believe in long-lasting professional relationships, and many of our partners stay with us for decades. To us, you are not just a number – you are a friend of the house and deserve easy access, total transparency, and no-nonsense.



## PARTNERSHIP

We don't just provide you with state-of-the-art hydraulics. If needed, our people will fly to your door and train your sales and technical staff to get the most out of your investment. We are in this together. We are allies aiming to prosper in partnership.

## REFERENCES FROM OUR CUSTOMERS

### “ APG AUSTRALIA

*We are slowly changing the industry here. 99 percent of our clients now have a HYCON power pack, and the majority of the market uses HYCON. Simply because it is a better product in so many ways.*

- Aaron Redmond, Product Specialist

### “ DIVING CONTRACTORS

*HYCON is not the most established brand in the industry, but they make the best tools. Today, whenever we need new equipment, we go to HYCON.*

-Emilio Peris, diver supervisor

### “ DYKKERSTAAL

*The HYCON Power pack? I have worked with 3-4 different types of power packs and this one is the absolute best because it simple. It performs at least as well as others, however, the reliability is exceptionally good! It often gets drenched in salt water, but still works after eight years!*

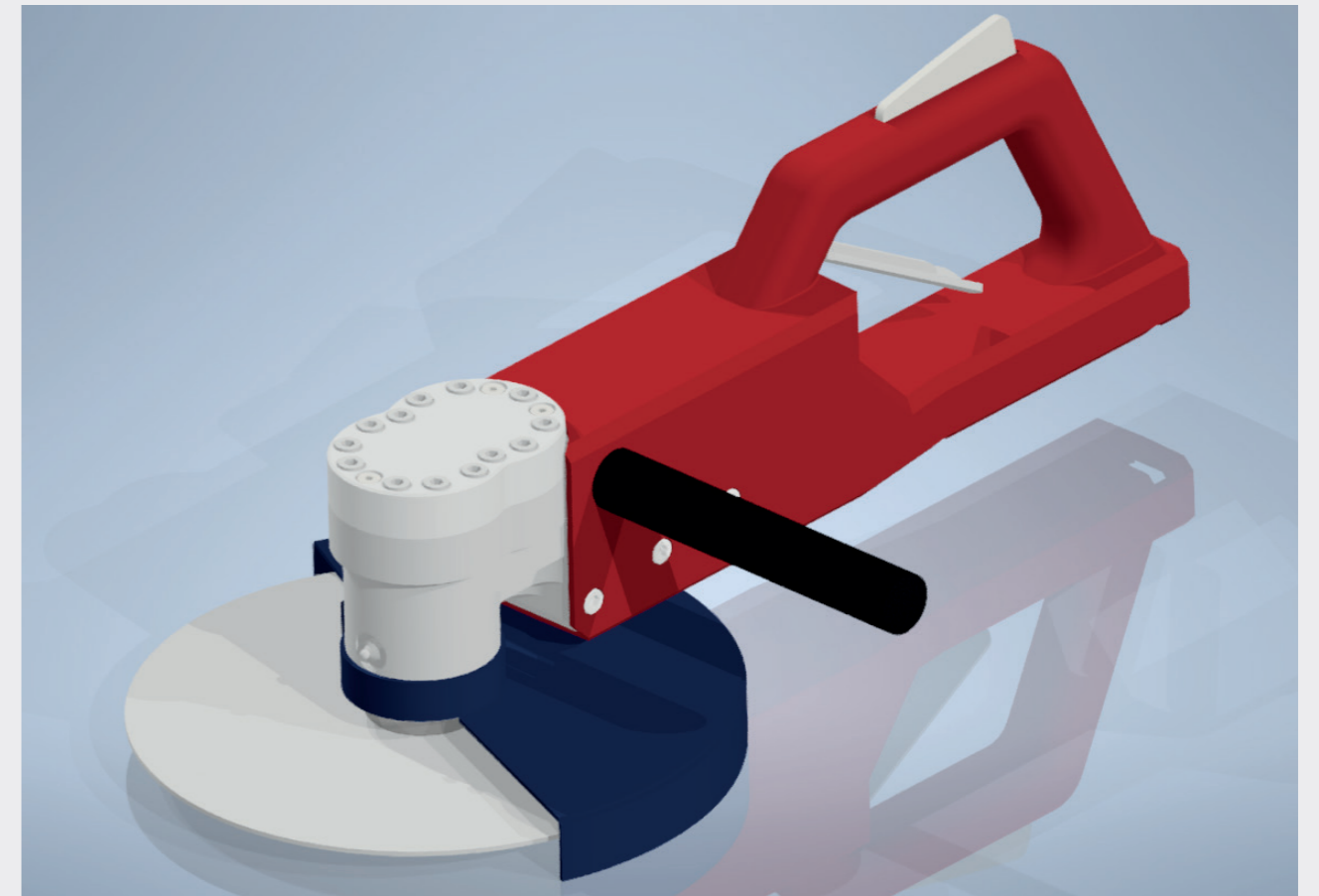
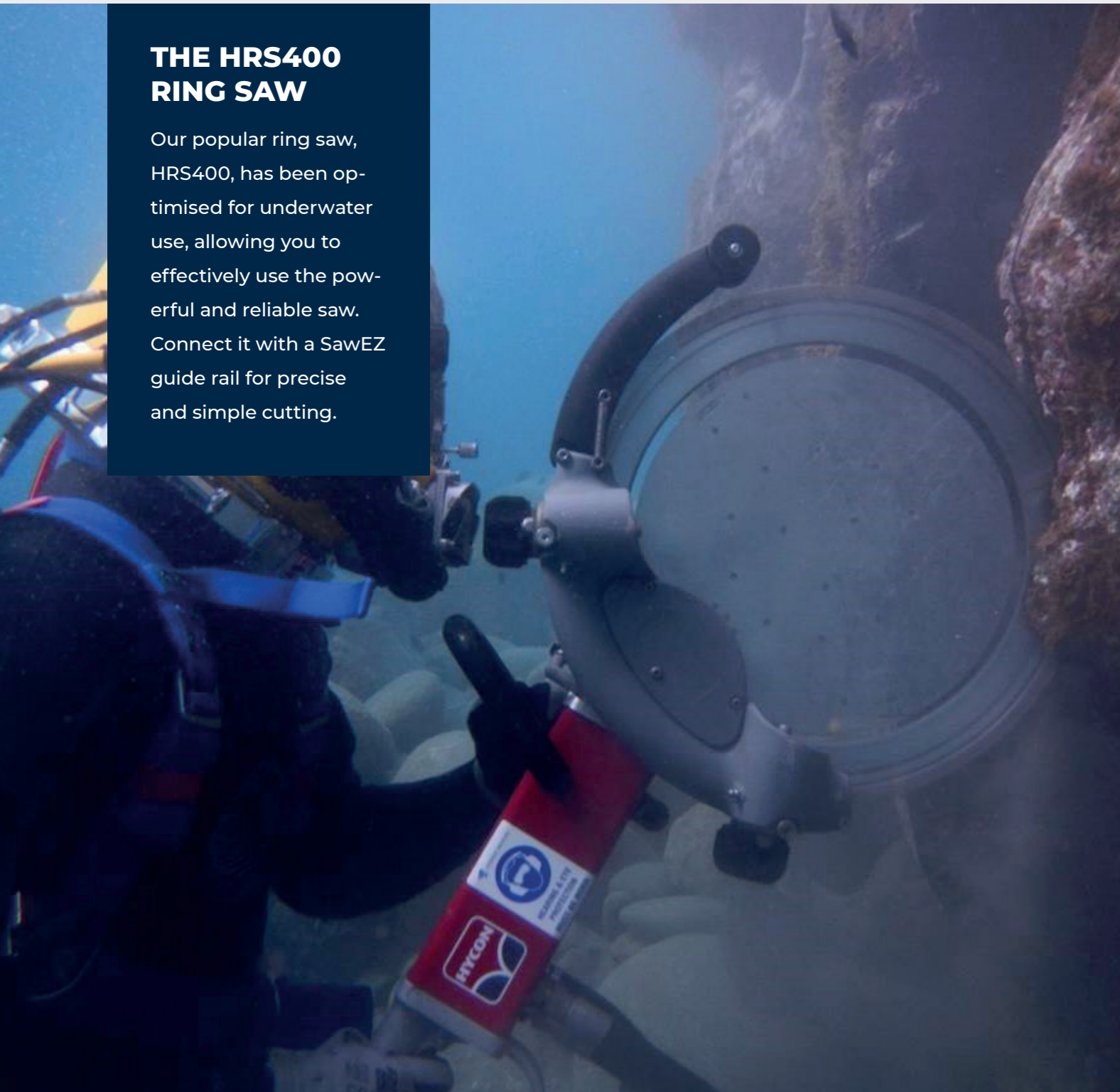
-Tom Kruse Winther, commercial diver



# EXPLORE OUR PRODUCTS

## THE HRS400 RING SAW

Our popular ring saw, HRS400, has been optimised for underwater use, allowing you to effectively use the powerful and reliable saw. Connect it with a SawEZ guide rail for precise and simple cutting.



## THE HAG230 ANGLE GRINDER

The HYCON HAG230 is an underwater angle grinder designed for underwater cutting and grinding. Boasting a powerful motor with 3200 RPM at 40 lpm and high torque, it offers versatility with compatibility for various attachments such as grinding wheels and barnacle busters.

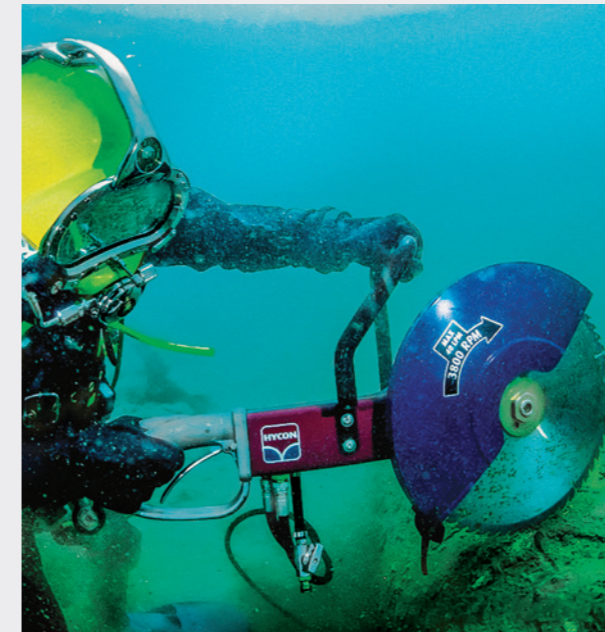
Featuring a comfortable handle and a two-position assist handle for left and right-hand use. The grinder weighs only 5.5 kg and was designed with ergonomics in mind.

Safety remains paramount in all our tools, evident through features like the trigger guard and infinitely adjustable wheel guard.



## THE HCD CORE DRILL

Our powerful core drills have no kick-back, ensuring the safety of the operator whether working handheld or on a rig.



## THE HCS CUT-OFF SAW

Our wide range of cut-off saws ensures that you will always find the right tool for any job. Mount it on a SawEZ guide rail for the perfect cut.

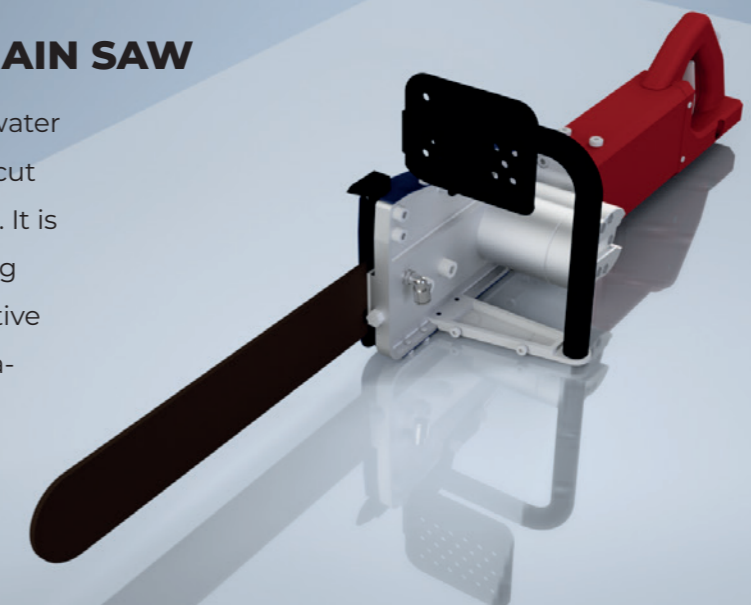


## THE HH BREAKER

Our hydraulic breaker is built with power, durability, and reliability in focus. With a HYCON breaker, you can work all day with no technical problems. The breakers have a rigid handle that allows the diver to apply maximum pressure on the element they are breaking.

## OUR NEW HPS CHAIN SAW

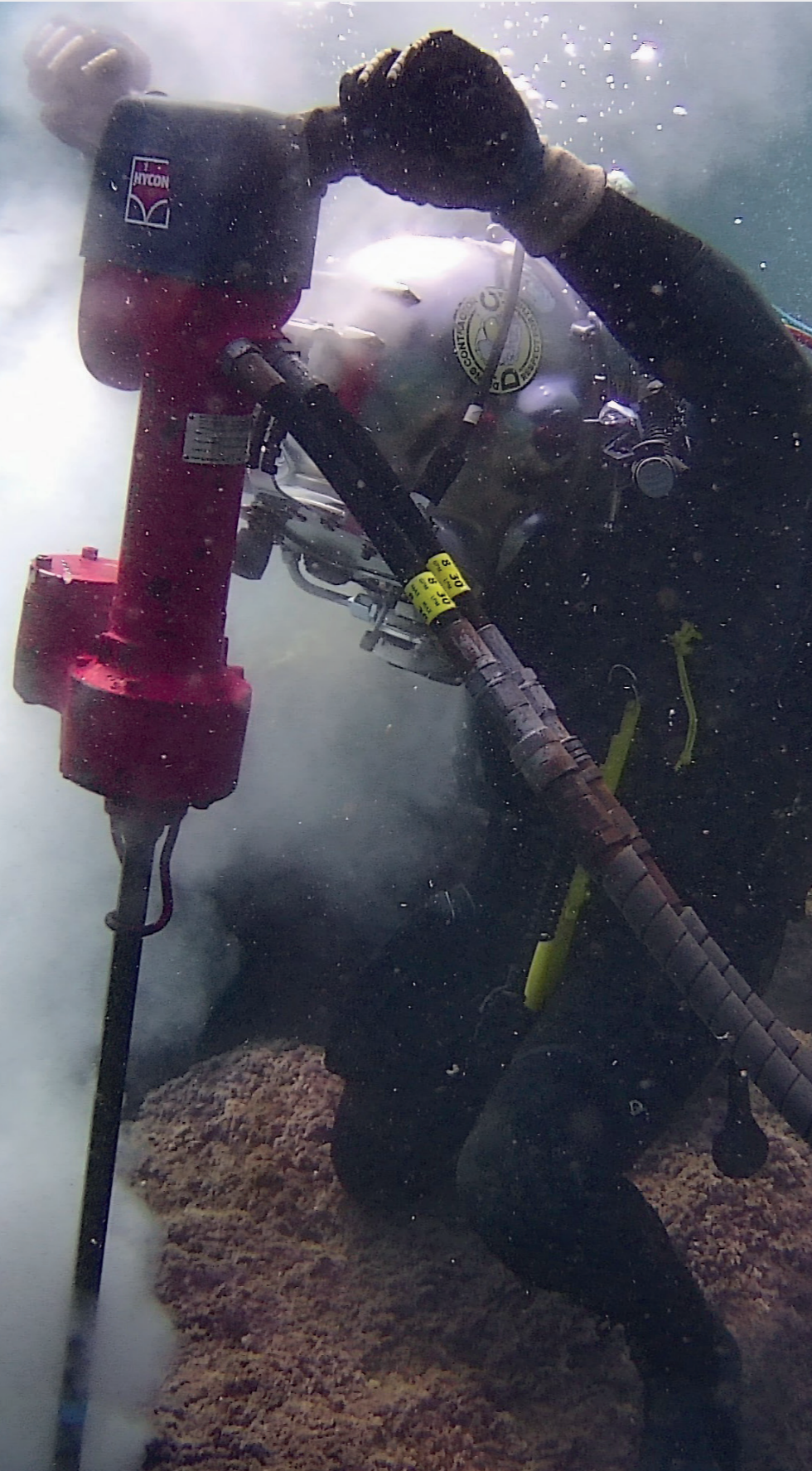
The HPS is a versatile underwater diamond chainsaw that can cut reinforced concrete and rock. It is powerful and smooth running with an ergonomic and intuitive design for easy and comfortable use. Available with different lengths of guide bar and chains.





## THE HRD28X ROCK DRILL

The HRD28X packs a powerful punch and has unparalleled rotation which can easily drill through any material, making it the perfect choice for underwater drilling in granite or concrete. The breakers have a rigid handle that allows the diver to apply maximum pressure on the element they are drilling.



## THE HWP SUBMERSIBLE PUMP

The HWP submersible pumps are compact, lightweight, and simple. They are perfect for dredging, cleaning, and desilting. Available in three sizes, you can be sure to find the pump that fits your needs.



## ACCESSORIES

At HYCON, we have several useful accessories for our tools. For example, using our oil flow divider to power a saw that is mounted on a SawEZ rail will make every job a breeze, and the remote control for the power pack will ensure maximum safety for every diver.





# THE HPP POWER PACK



The HYCON HPP power pack serves as the backbone for our range of power tools, embodying our core values of power, portability, and reliability.

Crafted to endure the demanding environments of underwater operations, this power pack ensures uninterrupted power supply to our tools for as long as required.

With over 14 models available, finding the ideal specifications to meet your needs is assured.





**CONTACT US!**

Interested in working with HY-  
CON? Please, get in touch with us.

**HYCON A/S**

Juelstrupparken 11  
9530 Støvring  
Denmark

Tel: **+45 9647 5200**

Email: [hycon@hycon.dk](mailto:hycon@hycon.dk)