

SM50 SUBMERSIBLE PUMP DEWATERING/JETTING

STANLEY®



SPECIFICATIONS

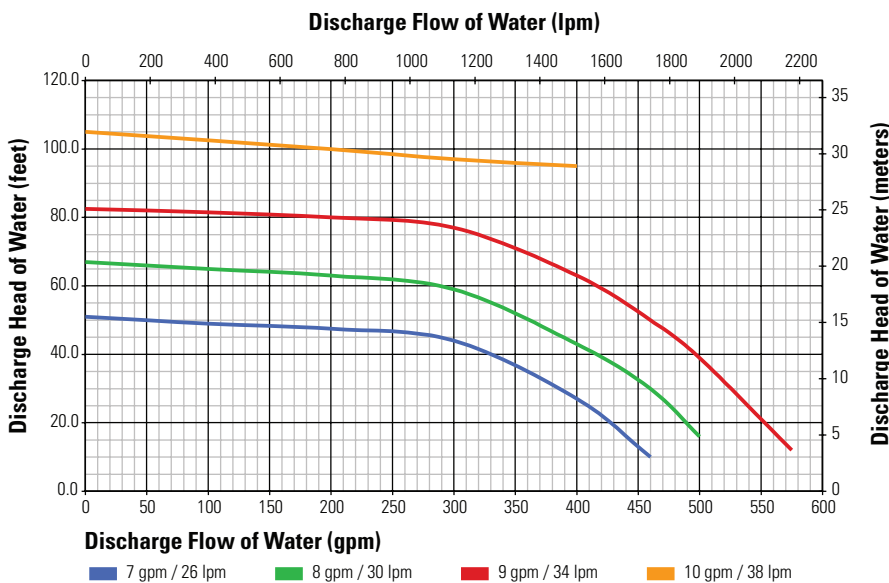
Capacity	3" NPTF with 3" Camlock
Performance	500 gpm / 1890 lpm
Flow Range	7-12 gpm / 26-45 lpm
Working Pressure	1000-2000 psi / 70-140 bar
Full Relief Setting	2250 psi / 155 bar
Weight	22 lbs / 10 kg
Length	11½" / 29.2 cm
Width	12" / 30.5 cm
Hydraulic Ports	-8 SAE O-ring
Connection	¾" Male Pipe Adapter
Couplers	Yes
Hose Whips	No



The **SM50** Submersible Pump is a self priming hydraulic dewatering pump with 3" NPFT discharge. With 500 gpm (30,000 gph) of discharge flow, this pump is an excellent dewatering pump as well as a jetting pump. The cast stainless steel semi-closed impeller resist corrosion and the cast aluminum housing fits the need for high volume and high head pump applications. Can draw water down to 3½".

See chart below for gpm discharge at flow.

SM50 PERFORMANCE GRAPH



FEATURES

- Stanley Hyrevz gear motor direct drive to impeller
- Stainless Steel impeller and fasteners
- Submersible and Self Priming
- Can run dry without damage
- 500 gpm (1890 lpm)
- 3" discharge
- Cast-in lifting eye

SM50 SUBMERSIBLE PUMP DEWATERING/JETTING

STANLEY®

ORDERING INFORMATION

PART NUMBER

SM50100 Submersible Pump, stainless steel impeller, 500 gpm output, 3" NPTF/Camlock, with FF couplers

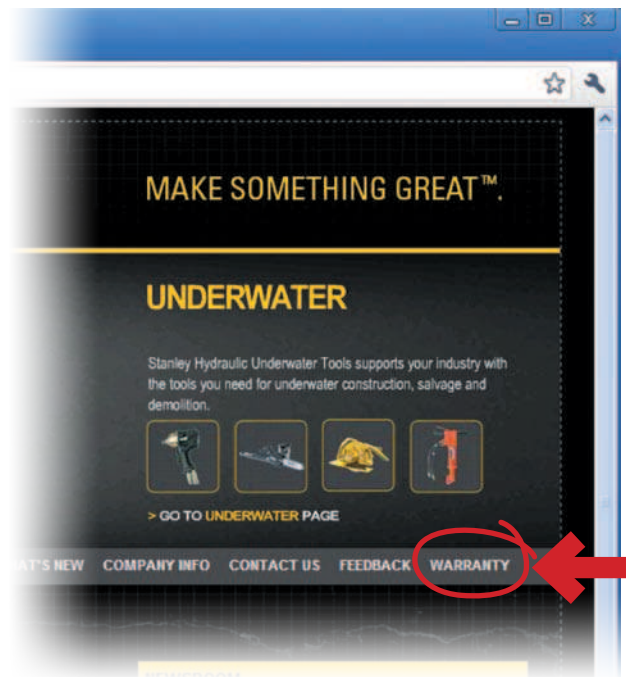
ACCESSORIES

- | | |
|--------------|--|
| 03971 | Flush-Face Coupling Set, 3/8" NPT |
| 03974 | Flush-Face Coupling Set, 1/2" NPT |
| 06830 | Hose Whip 18" long, -8 SAE x 1/2" NPT |
| 31848 | Dual Hose, 50' x 1/2", with couplers |
| 31972 | Dual Hose, 25' x 1/2", with couplers |
| 58633 | Twinned Hose, 25' x 1/2", with couplers |
| 58634 | Twinned Hose, 50' x 1/2", with couplers |
| 52720 | Coupler, 3" NPT x 3" Camlock |
| 56761 | Discharge Hose, lay-flat, 3" diameter x 25' with male & female 3" camlock couplers |
| 15248 | Adapter, 3", female camlock x male fire hose (NH) thread |

When hydraulic hose exceeds 100' (30.4 m) in length, increase I.D. of both pressure and return hose. For more information, consult Stanley Hydraulic Tools.

IMPORTANT

To fill out a Product Warranty Recording form and for information on your warranty visit stanleyhydraulic.com and select the Warranty tab.



Note: The warranty recording form must be submitted to validate the warranty.

All Stanley Hydraulic Tools, parts, accessories and allied equipment are subject to design improvements, specifications and price changes at any time without notice and with no obligation to units already sold. Weights, dimensions and operating specifications listed herein are subject to change without notice. Where specifications are critical to your applications, please consult Stanley Hydraulic Tools.