

CS11 UNDERWATER CHAIN SAW

STANLEY[®]



The **CS11** is an extreme duty hydraulic powered chain saw for cutting all types of wood structures underwater - including bridge pilings, pier and dock timbers. It's robust design and high torque gear motor provides divers instant chain speed to cut through the toughest timbers with ease. The power to weight ratio is significantly higher than any other wood cutting chain saw and is available with bar lengths up to 36" (91 cm). Painted hi-visibility yellow.



FEATURES

- Integral Stanley Hyrevz gear motor produces high torque
- Direct drive motor – no chain coast when trigger is released
- Stainless Steel spool and fasteners
- Interlocking safety trigger and hand guard
- Large assist handle
- Manual chain oiler
- Adjustable automatic chain oiler
- Bucking cleat
- Wide flow range
- Order bar and chain separately

SPECIFICATIONS

Cut Capacity	24, 30 & 36" / 61, 76 & 91 cm (See Ordering Information)
Chain Type	3/8" Pitch
Circuit Type	Open Center
Flow Range	10-14 gpm / 38-53 lpm
Optimum Flow	14 gpm / 53 lpm
Working Pressure	1500-2000 psi / 105-140 bar
Full Relief Setting	2250 psi / 155 bar
Motor Speed @ 12 gpm	5295 rpm
Chain Speed @ 12 gpm	2591' per min / 13,16 meters per sec
Weight (less bar/chain)	17 lbs / 7.7 kg
Length (less bar/chain)	17" / 43 cm
Width	9" / 23 cm
Hydraulic Ports	-8 SAE O-ring
Couplers	Yes
Hose Whips	Yes

CS11 UNDERWATER CHAIN SAW

STANLEY®

ORDERING INFORMATION

PART NUMBER

CS113N0001 Chain Saw, Underwater, Couplers, CE, No Bar & Chain Order Bar and Chain Separately Below

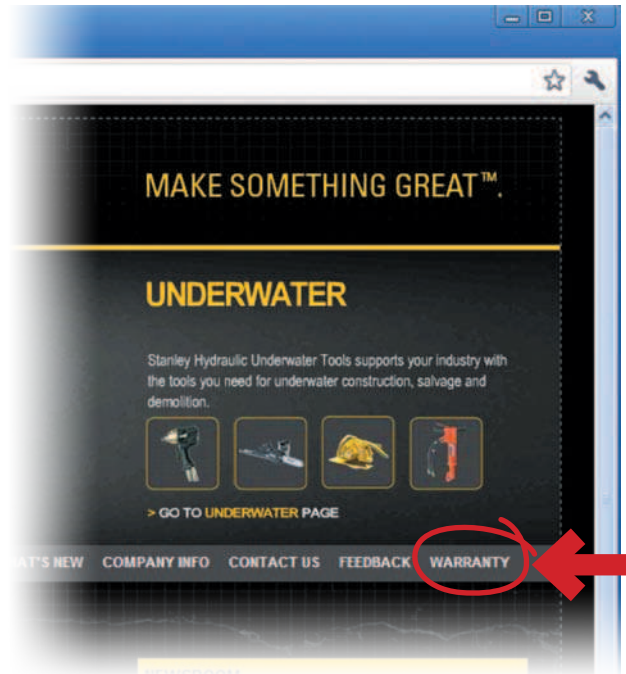
ACCESSORIES

03971	Flush-Face Coupling Set, 3/8" NPT
03974	Flush-Face Coupling Set, 1/2" NPT
06830	Hose Whip 18" long, -8 SAE x 1/2" NPT
02684	24"/61 cm Sprocket Nose Saw Bar
01824	24"/61 cm Saw Chain
03192	30"/76 cm Sprocket Nose Saw Bar
03194	30"/76 cm Saw Chain
03193	36"/91 cm Sprocket Nose Saw Bar
03195	36"/91 cm Saw Chain
31848	Dual Hose, 50' x 1/2", with couplers
31972	Dual Hose, 25' x 1/2", with couplers
58633	Twinned Hose, 25' x 1/2", with couplers
58634	Twinned Hose, 50' x 1/2", with couplers

When hydraulic hose exceeds 100' (30.4 m) in length, increase I.D. of both pressure and return hose. For more information, consult Stanley Hydraulic Tools.

IMPORTANT

To fill out a Product Warranty Recording form and for information on your warranty visit stanleyhydraulic.com and select the Warranty tab.



Note: The warranty recording form must be submitted to validate the warranty.

All Stanley Hydraulic Tools, parts, accessories and allied equipment are subject to design improvements, specifications and price changes at any time without notice and with no obligation to units already sold. Weights, dimensions and operating specifications listed herein are subject to change without notice. Where specifications are critical to your applications, please consult Stanley Hydraulic Tools.