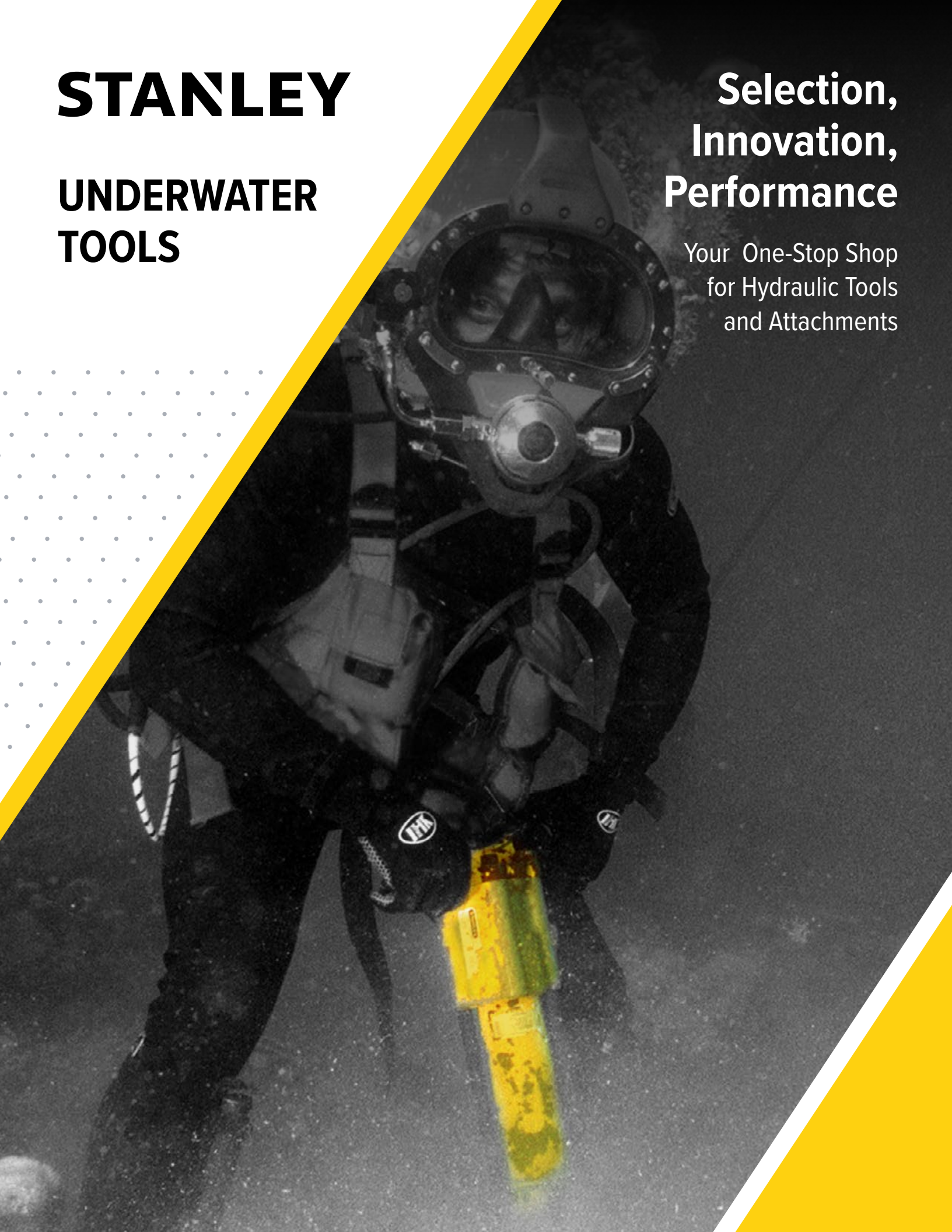


STANLEY

UNDERWATER TOOLS

Selection, Innovation, Performance

Your One-Stop Shop
for Hydraulic Tools
and Attachments



SINKER DRILL

SINKER DRILL Model SK58

The STANLEY SK58 Sinker Drill is a heavy duty rock drill designed for drilling underwater in concrete, rock and masonry. The feathering on/off valve makes starting the drill bit easy. The SK58 uses industry standard drill steels and can drill up to a 3" (75 mm) diameter hole up to 20' (6 m) deep. The direct drive rotation motor drives the 1" x 4¼" hex shank drill steel and is adjustable between 0 and 300 rpm. Air is required to clear holes of debris. Painted hi-visibility yellow.

When hydraulic hose exceeds 100' (30.4 m) in length, increase I.D. of both pressure and return hose. For more information, consult STANLEY.



Model	Capacity	Steel Type	Flow Range	Working Pressure	Circuit Type	Rotation Speed	Hydraulic Ports	Couplers	Hose Whips
SK58310 (NON-CE)	3" HOLE, UP TO 20' DEEP	1" X 4¼" HEX SHANK (2.54 CM X 10.795 CM)	7-9 GPM / 26-34 LPM	1500-2000 PSI / 105-140 BAR	OPEN CENTER	0-300 RPM	-8 SAE OPENING	NO	YES

ACCESSORIES

Part No.	Description
03971	FLUSH-FACE COUPLING SET, 3/8" NPT
03974	FLUSH-FACE COUPLING SET, 1/2" NPT
31848	DUAL HOSE, 50' X 1/2", WITH COUPLERS
31972	DUAL HOSE, 25' X 1/2", WITH COUPLERS
58633	TWINNED HOSE, 25' X 1/2", WITH COUPLERS
58634	TWINNED HOSE, 50' X 1/2", WITH COUPLERS
05177	CARBIDE ROCK BIT, FOR USE WITH AIR, 13/8" DIAMETER, H-THREAD - REQUIRES DRILL STEEL
05178	CARBIDE ROCK BIT, FOR USE WITH AIR, 1 1/2" DIAMETER, H-THREAD - REQUIRES DRILL STEEL

Part No.	Description
04914	CARBIDE ROCK BIT, FOR USE WITH AIR, 2" DIAMETER, H-THREAD - REQUIRES DRILL STEEL
05170	DRILL STEEL FOR USE WITH AIR, 1 X 4 1/4", H-THREAD, 24" U/C
05171	DRILL STEEL FOR USE WITH AIR, 1 X 4 1/4", H-THREAD, 48" U/C

HAMMER DRILL

HAMMER DRILL Model HD45

The feathering on/off valve and adjustable rotation speed allows easy drill bit start-up and precise control. The high torque rotation motor drives standard 736 Skil hex carbide tipped drill bits and is capable of drilling a 2" diameter hole up to 29" deep. Fluted drill bits require no water or air to clear holes. Ideal for drilling holes for setting anchor bolts. Painted hi-visibility yellow.



Model	Chuck Capacity	Steel Capacity	Circuit Type	Flow Range	Optimum Flow	Working Pressure	Rotation Speed	Hydraulic Ports	Couplers
HD4531001	2" DIAMETER OR 4" CORE	736 SKIL HEX	OPEN CENTER	7-9 GPM / 26-34 LPM	8 PGM / 30 LPM	1500-2000 PSI / 105-140 BAR	0-300 RPM	8 SEA O-RING	VARIES

ACCESSORIES

Part No.	Description
03971	FLUSH-FACE COUPLING SET, 3/8" NPT
03974	FLUSH-FACE COUPLING SET, 1/2" NPT
31848	DUAL HOSE, 50' X 1/2", WITH COUPLERS
31972	DUAL HOSE, 25' X 1/2", WITH COUPLERS
58633	TWINNED HOSE, 25' X 1/2", WITH COUPLERS
58634	TWINNED HOSE, 50' X 1/2", WITH COUPLERS
02280	CARBIDE BIT, 3/4" X 24" OAL
05163	CARBIDE BIT, 7/8" X 24" OAL
02281	CARBIDE BIT, 1" X 24" OAL
02282	CARBIDE BIT, 1 1/4" X 24" OAL

Part No.	Description
05167	CARBIDE BIT, 1 1/2" X 24" OAL
02283	CARBIDE BIT, 2" X 24" OAL
04668	CARBIDE BIT, 1" X 18" OAL
04896	CARBIDE BIT, 1 1/4" X 36" OAL
27902	PERCUSSION CORE BIT, 2 1/2" DIAMETER X 6" OAL (PART #30279 REQUIRED)
27904	PERCUSSION CORE BIT, 3" DIAMETER X 6" OAL (PART #30279 REQUIRED)
30279	HD45 (SKIL 736) ADAPTER

IMPACT DRILL

IMPACT DRILL Model ID07

The STANLEY ID07 Impact Drill is two hydraulic underwater tools in one - an impact wrench and a wood drill. The .75" square drive impact wrench delivers torque up to 500 ft lbs and can tighten or loosen nuts and bolts and drive lag screws. Use the ID07 with the 05079 adapter and wood boring bits to drill up to 1 1/16" diameter holes into timber with no reactive torque to the diver. Trigger guard and hi-visibility yellow paint is standard.

FEATURES

- Integral STANLEY Hyrevz gear motor strikes a perfect balance of high power and low weight
- Stainless Steel spools and fasteners
- Forward-Reverse with variable speed
- 500 ft lbs/675 Nm of impact torque
- Oversized trigger with guard for operator comfort
- Wiper seals on reversing and trigger spool
- Built in reverse check valve ensures long seal life
- Plastisol coated handle for comfortable ergonomic grip
- Forward position of handle provides better balance
- Open Center/Closed Center-Dual Spool Feature
- Cast-in lifting eye



* whips and couplers are included

Model	Capacity	Performance	Flow Range	Working Pressure	Hydraulic Ports	Connect size and type
ID0792001	1/2 IN / 12.7MM	TORQUE 500 FT LBS / 675 NM	4-12 GPM / 15-45 LPM	750-2000 PSI / 50-140 BAR	8 SAE ORINGS	3/8" MALE PIPE ADAPTER

ACCESSORIES

Part No.	Description
03971	FLUSH-FACE COUPLING SET, 3/8" NPT
03974	FLUSH-FACE COUPLING SET, 1/2" NPT
31848	DUAL HOSE, 50' X 1/2", WITH COUPLERS
31972	DUAL HOSE, 25' X 1/2", WITH COUPLERS
58633	TWINNED HOSE, 25' X 1/2", WITH COUPLERS
58634	TWINNED HOSE, 50' X 1/2", WITH COUPLERS

WOOD BORING BITS

Part No.	Description
05079	ADAPTOR 1/2" FEMALE SQ. DR. X 7/16" QC HEX
27850	WOOD BIT: 9/16" DIA. X 8" X 12" OAL
27851	WOOD BIT: 11/16" DIA. X 8" X 12" OAL
27852	WOOD BIT: 13/16" DIA. X 8" X 12" OAL
27853	WOOD BIT: 15/16" DIA. X 8" X 12" OAL
27854	WOOD BIT: 17/16" DIA. X 8" X 12" OAL
27855	WOOD BIT: 9/16" DIA. X 12" X 16" OAL
27856	WOOD BIT: 11/16" DIA. X 12" X 16" OAL

Part No.	Description
27857	WOOD BIT: 13/16" DIA. X 12" X 16" OAL
27858	WOOD BIT: 15/16" DIA. X 12" X 16" OAL
27859	WOOD BIT: 17/16" DIA. X 12" X 16" OAL
27860	WOOD BIT: 9/16" DIA. X 18" X 22" OAL
27861	WOOD BIT: 11/16" DIA. X 18" X 22" OAL
27862	WOOD BIT: 13/16" DIA. X 18" X 22" OAL
27863	WOOD BIT: 15/16" DIA. X 18" X 22" OAL
27864	WOOD BIT: 17/16" DIA. X 18" X 22" OAL

Wood Boring Bits have 7/16" Quick Change, Hex Shank Requires Part # 05079 Adaptor for use with ID07 U/W Impact/Drill

DRILL Model DL07652

The STANLEY DL07 hydraulic drill is a forward/reverse, variable speed drill with a ½” keyed chuck for underwater drilling applications. The DL07 has more than enough torque to drill most steel, masonry, wood or coral. A two position assist handle and trigger guard are standard. See chart below for speeds at select gpm of hydraulic flow. Painted hi-visibility yellow.

FEATURES

- Integral STANLEY Hyrevz gear motor produces high torque at any drilling speed
- Stainless Steel spools and fasteners
- Forward-Reverse with variable speed
- Dual position assist handle provides increased control
- Oversized trigger with guard for operator comfort
- Wiper seals on reversing and trigger spool
- Built in reverse check valve ensures long seal life
- Plastisol handle for comfortable ergonomic grip
- Forward position of handle provides better balance
- Open Center/Closed Center-Dual Spool Feature
- Cast-in lifting eye



* whips and couplers not included

Model	Chuck Capacity	Flow Range	Working Pressure	Couplers	Torque
DL07652	½” / 12MM	3-10 GPM / 11-38 LPM	1000-2000 PSI / 70-140 BAR	3/8” MALE PIPE ADAPTER	350-1250 RPM
DL0765201	½” / 12MM	3-10 GPM / 11-38 LPM	1000-2000 PSI / 70-140 BAR	3/8” MALE PIPE ADAPTER	350-1250 RPM

DL07 SPEED/HYDRAULIC FLOW

Speed (RPM)	Hydraulic Flow
350	3 GPM / 11.3 LPM
475	4 GPM / 15 LPM
750	6 GPM / 23 LPM
1000	8 GPM / 30 LPM
1250	10 GPM / 38 LPM

DL07 TORQUE AT PSI/BAR

Torque	PSI / BAR
4 FT LBS @ 500 PSI	0.5 NM @ 35 BAR
9 FT LBS @ 1000 PSI	1.2 NM @ 70 BAR
14 FT LBS @ 1500 PSI	1.9 NM @ 105 BAR
19 FT LBS @ 2000 PSI	2.6 NM @ 140 BAR

ACCESSORIES

Part No.	Description
03971	FLUSH-FACE COUPLING SET, 3/8” NPT
03974	FLUSH-FACE COUPLING SET, ½” NPT
31848	DUAL HOSE, 50’ X ½”, WITH COUPLERS
31972	DUAL HOSE, 25’ X ½”, WITH COUPLERS
58633	TWINNED HOSE, 25’ X ½”, WITH COUPLERS
58634	TWINNED HOSE, 50’ X ½”, WITH COUPLERS
01857	ADJUSTABLE CHUCK AND ADAPTER, ¾” SQUARE X ¾”
04365	¾” CHUCK, 3 JT TAPER, USE 5/8” BITS

IMPACT WRENCHES

IMPACT WRENCHES Model IW12 IW16 IW24



IW12



IW16



IW24
(NON CE)

The STANLEY IW Series of tools are medium to extreme duty square drive impact wrenches designed for some of the toughest underwater bolting applications. Powered by an integral STANLEY Hyrevz motor, our impact wrenches have an impact intensity ranging from 250 ft lbs of torque to 3,500 ft lbs of torque. Designed to run from a wide range of hydraulic circuits, this wrench allows underwater bolting in the most extreme applications. Hi-visibility yellow paint is standard.

FEATURES

- Integral STANLEY Hyrevz gear motor produces high torque
- Stainless Steel spools and fasteners
- Forward-Reverse with variable speed
- “D” style grip handle with inside trigger
- Feathering on/off trigger for precise control
- Adjustable impact intensity
- Durable swing hammer mechanism
- Cast-in lifting eye
- Pistol grip style handle dipped in Plastisol for comfortable ergonomic grip available on IW12

Model	Capacity	Torque	Flow Range	Working Pressure	Hydraulic Ports	Connection	Couplers	Hose Whips
IW1234001	¾" SQUARE DRIVE	250-1200 FT LBS / 340-1632 NM	4-12 GPM / 15-45 LPM	1000-2000 PSI / 70-140 BAR	8 SAE O-RINGS	3/8"	NO	NO
IW16350	1" SQUARE DRIVE	500-2500 FT LBS / 680-3400 NM	7-12 GPM / 26-45 LPM	1500-2000 PSI / 105-140 BAR	8 SAE O-RINGS	3/8"		NO
IW24360	1½" SQUARE DRIVE	800-3500FT LBS / 1088-4760 NM	7-12 GPM / 26-45 LPM	1800-2000 PSI / 124-140 BAR	8 SAE O-RINGS	3/8"	NO	NO

ACCESSORIES

Part No.	Description
03971	FLUSH-FACE COUPLING SET, ¾" NPT
03974	FLUSH-FACE COUPLING SET, ½" NPT
06830	HOSE WHIP 18" LONG, -8 SAE X ½" NPT
31848	DUAL HOSE, 50' X ½", WITH COUPLERS
31972	DUAL HOSE, 25' X ½", WITH COUPLERS
58633	TWINNED HOSE, 25' X ½", WITH COUPLERS
58634	TWINNED HOSE, 50' X ½", WITH COUPLERS
31203	EXTENSION, 10", 1" DRIVE (IW16 MODEL)
33276	SOCKET RETAINER PIN, 1" SQUARE DRIVE SOCKET (IW16 MODEL)

Part No.	Description
33277	SOCKET RETAINER RING, 1" SQUARE DRIVE SOCKET (IW16 MODEL)
01857	ADJUSTABLE CHUCK & ADAPTER ¾" SQ FEMALE X ¾" CHUCK (IW12 MODEL)

CUT-OFF SAW Model CO23



The CO23 Cut-Off Saw is a hydraulic powered saw for dimensional cutting of metal, concrete, rock, masonry and coral. It has a high torque gear motor and 10" blade capacity for abrasive and diamond wheels with a 1" arbor. The CO23 is designed for underwater operation and is painted hi-visibility yellow.

FEATURES

- Integral STANLEY Hyrevz gear motor produces high torque
- Direct drive motor
- Stainless Steel spool and fasteners
- Adjustable shoe for precise cuts
- Interlocking safety trigger
- Cast aluminum handle and guard for durability
- Counter-clockwise rotation
- Wide flow range

Model	Capacity	Performance	Arbor	Circuit Type	Working Pressure	Connection Size & Type
CO23341	10" / 25.4 CM WHEEL	3275 RPM / 15 GPM	1" / 2.5CM	1000-2000 PSI / 70-140 BAR	3/8"	8 SAE O-RINGS

ACCESSORIES

Part No.	Description	Part No.	Description
03971	FLUSH-FACE COUPLING SET, 3/8" NPT	04117	10" / 25.4 CM DIAMETER, 1" ARBOR, ABRASIVE BLADE FOR ALUMINUM AND METAL
03974	FLUSH-FACE COUPLING SET, 1/2" NPT	31848	DUAL HOSE, 50' X 1/2", WITH COUPLERS
06830	HOSE WHIP 18" LONG, -8 SAE X 1/2" NPT	31972	DUAL HOSE, 25' X 1/2", WITH COUPLERS
03694	10" / 25.4 CM DIAMETER, 1" ARBOR, DIAMOND BLADE FOR CONCRETE	58633	TWINNED HOSE, 25' X 1/2", WITH COUPLERS
04116	10" / 25.4 CM DIAMETER, 1" ARBOR, ABRASIVE BLADE FOR CONCRETE	58634	TWINNED HOSE, 50' X 1/2", WITH COUPLERS

GRINDER Model GR29



The STANLEY Hydraulic GR29 Grinder is a right angle grinder that can be used for grinding and cleaning in underwater applications with a variety of wheels, brushes and attachments. The high torque gear motor drives a standard 5/8 - 11 threaded spindle. A 9" adjustable wheel guard, two position assist handle and trigger guard are standard. Painted hi-visibility yellow.

FEATURES

- Integral STANLEY Hyrevz gear motor produces high torque
- Stainless Steel spools and fasteners
- Two position assist handle for right/left hand operation
- Oversized trigger with guard for diver comfort
- Adjustable wheel guard for infinite positions
- Plastisol covered handle for comfortable ergonomic grip
- Use with grinding wheels, hull scrubbing brushes, wire and nylon brushes, barnacle busters and Desmond wheels
- 3200 rpm @ 12 gpm
- Cast-in lifting eye

Model	Capacity	Spindle	Circuit	RPM	Working Pressure	Hydraulic Ports	Hose Whips
GR2930101	9" / 23CM WHEEL	5/8" (1.58MM) - 11 THREADED	OPEN CENTER	3200 @ 12 GPM / 45 LPM	1000-2000 PSI / 70-140 BAR	38 SAE ORINGS	NO

ACCESSORIES

Part No.	Description	Part No.	Description
03971	FLUSH-FACE COUPLING SET, 3/8" NPT	03691	GRINDING WHEEL, 7" DIAMETER X 5/8 - 11 THREAD
03974	FLUSH-FACE COUPLING SET, 1/2" NPT	05194	ADAPTER, 5/8 - 11 THREAD, DEPRESSED CENTER WHEEL
06830	HOSE WHIP 18" LONG, -8 SAE X 1/2" NPT	31848	DUAL HOSE, 50' X 1/2", WITH COUPLERS
02587	GRINDING WHEEL FOR METAL, 9" DIAMETER X 5/8 - 11 THD	31972	DUAL HOSE, 25' X 1/2", WITH COUPLERS
02588	GRINDING WHEEL FOR MASONRY, 9" DIAMETER X 5/8 - 11 THD	58633	TWINNED HOSE, 25' X 1/2", WITH COUPLERS
		58634	TWINNED HOSE, 50' X 1/2", WITH COUPLERS

CHIPPING HAMMER

CHIPPING HAMMER Model CH15 CH18



CH18



CH15

The ergonomic "D" handle with protected trigger prevents accidental operation of the tool. The handle is plastisol coated for diver comfort. The CH18 has a slide latch style tool bit retainer that will accept .580 hex shank, round collar tool bits. Painted hi-visibility yellow.

Features

- Ergonomic "D" handle with protected trigger
- Stainless Steel spool and fasteners
- Handle is Plastisol coated for diver comfort
- Uses standard .580 hex shank, round collar tool bits
- High power to weight ratio
- Operates in any position

Model	Steel Capacity	Handle Type	Circuit Type	Flow Range	Working Pressure	Hydraulic Ports	Coupler	Hose Whips
CH18111	.580 HEX SHARK	D" HANDLE WITH INSIDE TRIGGER	OPEN CENTER	7-9 GPM / 26-34 LPM	1500-2000 PSI / 105-140 BAR	6 SAE O RING	NO	YES
CH1533101	.580 HEX SHANK	"D" HANDLE WITH INSIDE TRIGGER	OPEN CENTER	7-9 GPM / 26-34 LPM	1000-2000 PSI / 70-140 BAR	6 SAE O RING	YES	YES

ACCESSORIES

Part No.	Description
03971	FFLUSH-FACE COUPLING SET, 3/8" NPT
03974	FLUSH-FACE COUPLING SET, 1/2" NPT
31848	DUAL HOSE, 50' X 1/2", WITH COUPLERS
31972	DUAL HOSE, 25' X 1/2", WITH COUPLERS
58633	TWINNED HOSE, 25' X 1/2", WITH COUPLERS

Part No.	Description
58634	TWINNED HOSE, 50' X 1/2", WITH COUPLERS
02278	FLAT CHISEL, 1" X 18", .580 HEX SHANK, ROUND COLLAR (MODEL CH18)
02279	BULL POINT, 1" X 18", .580 HEX SHANK, ROUND COLLAR (MODEL CH18)
03690	CHISEL BIT, 1" X 9", .580 HEX SHANK, ROUND COLLAR (MODEL CH18)
03963	CHISEL BIT, 2" X 5", .580 HEX SHANK, ROUND COLLAR (MODEL CH18)

CHAIN SAWS

CHAIN SAWS Model DS11 CS11 CS06



STANLEY underwater saws are built to withstand the most demanding underwater conditions. The DS11 Diamond Chain Saw is specifically designed to cut solid concrete underwater with the ability to plunge cut sea walls up to 18 inches thick. It comes in two available bar lengths (15" and 18") and two different chains depending on the amount of rebar and hardness of concrete. The CS06 and CS11 are both designed to cut wood structures underwater such as bridge pilings, pier, and dock timbers. Both feature the STANLEY Hyrevz motor for increased durability and power. The power to weight ratio of all chainsaws

is significantly higher than any other comparable chainsaw.

FEATURES

- Direct drive motor - no chain coast when trigger is released
- Integral STANLEY Hyrevz gear motor for durability and power
- Stainless Steel spool and fasteners
- Interlocking safety trigger and hand guard
- Order bar and chain separately – See Chart for Selection

Model	Capacity	Chain Type	Circuit Type	Flow Range	Working Pressure	Couplers	Hose Whips	Lubrication/ Cooling
DS115000	15 OR 18" / 38 OR 45 CM BAR	DIAMOND IMPREGNATED CHAIN SEGMENTS	OPEN CENTER	12 GPM / 45 LPM	1000-2000 PSI / 70-140 BAR	YES	YES	INTERNAL WATER CHANNELS IN BAR
CS11150D	24,32,36,42 IN / 61,81,91,107 CM	3/8" PITCH	OPEN CENTER	~14 GPM / 53 LPM	1500-2000 PSI / 105-140 BAR	YES	YES	
CS06630	15 & 20" / 38 & 51 CM	STANDARD FLOATING RIM SPROCKET & WEAR PLATES		7-9GPM / 26-34 LPM	1500-2000 PSI / 105-140 BAR	NO	NO	

Pinnacle-32 Pinnacle-39	150 in-ft		600-800 in-ft				2000 in-ft	
Ultra-32 Ultra-37		2000 in-ft						1500 in-ft
Aggregate	Extra Hard		Hard		Medium		Soft	Abrasive
Material	Chert Flint	Basalt Quartz	Granite River Rock		Marble Limestone	Sandstone		Masonry, Brick, Block, Green Concrete
Approximate Moh's Scale	9	8	7	6	5	4	3	
Reinforcing Steel	1"	Lots of Steel Double Mat	Single Mat	#5	#4	Some Steel #3	Wire Mesh	No Steel

ACCESSORIES

Part No.	Description
30305	15" BAR, SPROCKET NOSE
56801	15" DIAMOND CHAIN, ULTRA 32
56803	15" DIAMOND CHAIN, PINNACLE, 32
30306	18" BAR, SPROCKET NOSE
56802	18" DIAMOND CHAIN, ULTRA 37
58632	18" DIAMOND CHAIN, PINNACLE, 37
03971	FLUSH-FACE COUPLING SET, 3/8" NPT
03974	FLUSH-FACE COUPLING SET, 1/2" NPT
06830	HOSE WHIP 18" LONG, -8 SAE X 1/2" NPT
23517	SPROCKET WRENCH

Part No.	Description
31848	DUAL HOSE, 50' X 1/2", WITH COUPLERS
31972	DUAL HOSE, 25' X 1/2", WITH COUPLERS
31972	TWINNED HOSE, 25' X 1/2", WITH COUPLERS
58634	TWINNED HOSE, 50' X 1/2", WITH COUPLERS
20859	DIAMOND CHAIN BUTTERFLY REPAIR KIT
20857	CHAIN REPAIR SPINNER
20858	CHAIN REPAIR BREAKER
DCP30101	WATER PUMP, 12 VDC, BATTERY CLIP
DCP30100	WATER PUMP, 12 VDC, MARINE TYPE PLUG

PUMPS Model SM50 TP03 TP08



TP08



TP03



SM50

With a range of 450 to 800 GPM of output flow the trash pumps offered by **STANLEY** are capable of moving high volumes of water, sand slurries, gravel, mud, and solids up to 4 inches in diameter. The SM50 Submersible Pump is a self-priming hydraulic dewatering pump with 3 inch NPFT discharge and a discharge flow of 500 gpm. The cast stainless steel semi-closed impeller resists corrosion and the cast aluminum housing fits the need for high volume and high head pump applications. Can draw water down to 3 ½ ".

Model	Capacity	Performance	Flow Range	Working Pressure	Hydraulic Ports	Connection	Couplers	Hose Whips
TP08013	4" (10.16CM) NPT 4" CAMLOCK	800 GPM / 3028 LPM	7-10 GPM / 26-38 LPM	2000 PSI / 140 BAR	10 PRESSURE 12 RETURN	½" NPT	YES	NO
TP0300301	3" (7.62 CM) NPTF 3" CAMLOCK	450 GPM / 1703 LPM	7-9 GPM / 26-34 LPM	2000 PSI / 140 BAR	10 PRESSURE 12 RETURN	¾" MALE PIPE ADAPTER	YES	NO
SM50100	3" (7.62CM) NPTF 3" CAMLOCK	500 GPM / 1892 LPM	7-12 GPM / 26-45 LPM	1000-2000 PSI / 70-140 BAR	10 PRESSURE 12 RETURN	¾" MALE PIPE ADAPTER	YES	NO

ACCESSORIES

Part No.	Description
03974	FLUSH-FACE COUPLING SET, ½ " NPT
31848	DUAL HOSE, 50' X ½ ", WITH COUPLERS
31972	DUAL HOSE, 25' X ½ ", WITH COUPLERS
58633	TWINNED HOSE, 25' X ½ ", WITH COUPLERS
58634	TWINNED HOSE, 50' X ½ ", WITH COUPLERS
65624	DISCHARGE HOSE, LAY-FLAT, 4" DIAMETER X 25' WITH MALE & FEMALE 4" CAMLOCK COUPLERS

BREAKERS

BREAKERS Model BR45 BR67 BR87



BR45

40 LB
2-6" CONCRETE



BR67

70 LB
6-8" CONCRETE



BR87

90 LB
8+" CONCRETE

STANLEY offers small to large size underwater hand held breakers with a weight class ranging from 50 lbs to 90 lbs. The BR87 is the hardest hitting underwater breaker we offer and can be used for rock breaking, coral removal, and rod and anchor driving. The feathering on/off valve on all of our breakers controls the speed and allows for easier initial tool placement. Standard 1 1/8" x 6" hex chuck and latch retainer. Painted hi-visibility yellow.

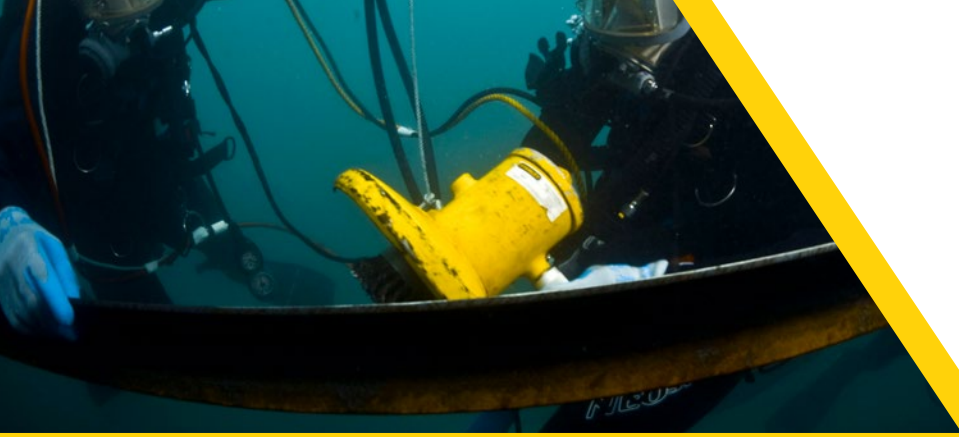
Model	Performance	Steel Capacity	Handle Type	Circuit Type	Flow Range	Working Pressure	Hydraulic Ports	Couplers	Hose Whips
BR87320	1080 BPM @ 8 GPM	1 1/8" X 6" HEX	T-HANDLE	OPEN CENTER	7-9 GPM / 26-34 LPM	1,500-2000 PSI / 105-140 BAR	8 SAE O-RING	NO	YES
BR67320	1300 BPM @ 8 GPM	1 1/8" X 6" HEX	T-HANDLE	OPEN CENTER	7-9 GPM / 26-34 LPM	1,500-2000 PSI / 105-140 BAR	8 SAE O-RING	NO	YES
BR45350	1525 BPM @ 8 GPM	1" X 4 1/4" HEX	T-HANDLE	OPEN CENTER	7-9 GPM / 26-34 LPM	1500-2000 PSI / 105-140 BAR	8 SAE O-RING	NO	YES

ACCESSORIES

Part No.	Description
03971	FLUSH-FACE COUPLING SET, 3/8" NPT
03974	FLUSH-FACE COUPLING SET, 1/2" NPT
31848	DUAL HOSE, 50' X 1/2", WITH COUPLERS
31972	DUAL HOSE, 25' X 1/2", WITH COUPLERS
58633	TWINNED HOSE, 25' X 1/2", WITH COUPLERS
58634	TWINNED HOSE, 50' X 1/2", WITH COUPLERS
02331	CLAY SPADE, 11/8" HEX, 5 1/2" WIDE BLADE
02332	ASPHALT CUTTER, 11/8" HEX, 5" WIDE BLADE

Part No.	Description
02333	MOIL POINT, 11/8" HEX, 14" UNDER COLLAR
02334	3" WIDE CHISEL, 11/8" HEX, 14" UNDER COLLAR
03990	NARROW CHISEL, 11/8" HEX, 14" UNDER COLLAR
04176	ROD DRIVER, 11/8" HEX, 1" ROD
08106	ASPHALT WEDGE, 11/8" HEX
07702	MOIL POINT, 1" HEX, 14" UNDER COLLAR
07703	NARROW CHISEL, 1" HEX, 14" UNDER COLLAR
07704	3" WIDE CHISEL, 1" HEX, 14" UNDER COLLAR
07705	CLAY SPADE, 1" HEX, 5 1/2" WIDE BLADE
07706	ASPHALT WEDGE, 1" HEX, 3" WIDE BLADE

**SELECTION.
INNOVATION.
PERFORMANCE.**



STANLEY®